

VIRA SAN has been formulated in line with the World Health Organisation (2020).

ABOUT:

VIRA SAN is a Hospital Grade and Food Safe disinfectant. Linking the power of Hydrogen Peroxide and Benzalkonium Chloride, VIRA SAN works by deactivating COVID-19 at the core in 60 seconds. The synergy between these compounds allows for optimal performance by initiating a quick removal of these threats and creating a film to ensure **prolonged protection of surfaces**. A 60-second contact time is required for VIRA SAN to kill COVID-19. VIRA SAN is a TGA Approved product (ARTG No. 340431).

USE ON:

Hard surfaces such as: glass, metal, plastic and steel.

High touchpoint areas: tables, doorknobs, light switches, taps and sinks, faucets, toilets, in the kitchen, play structures, exercise equipment, school equipment, escalators, elevators and more.

*Spot test on surface before use.

PROVEN TO KILL:

Effective against COVID-19 (SARS-CoV-2) in 60 seconds. It has been tested against coronavirus murine hepatitis virus strain 1 (MHV-1) a proven surrogate to the coronavirus family.

99.999% of bacteria: *S. aureus*, *Pseudomonas aeruginosa*, *Salmonella choleraesuis*.

How to use?

For hard surfaces simply 'spray, wait and wipe'

1



- If the surface is visibly dirty, pre-clean soiled areas to be disinfected. Rinse with a damp cloth and allow to air dry.

2



- Wear gloves and spray undiluted on the surface.

3



- Leave it on surface for 60 seconds to kill COVID-19.

4



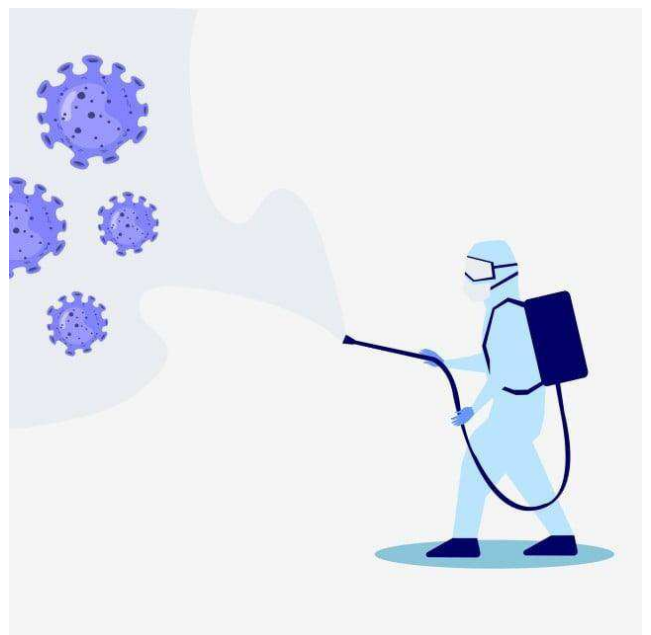
- Wipe off with cloth in one continuous direction.

How to use?

VIRA SAN can be used in a fogging machine.

Simply use product undiluted and allow the machine to disperse solution evenly throughout designated area.

Always refer to SDS. Product should not be heated.

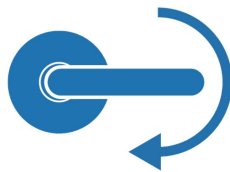


Where to use?

Hard surfaces and high-touch areas.



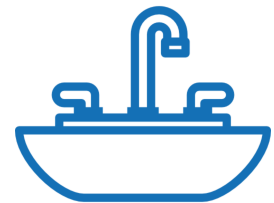
- Tables and chairs



- Doorknobs



- Light Switches



- Taps and sinks



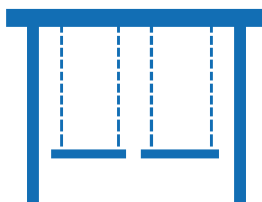
- Toilets



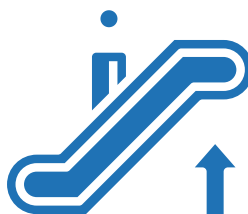
- In the kitchen
(food safe)



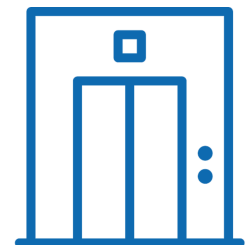
- Exercise equipment



- Play structures



- Escalators



- Elevators